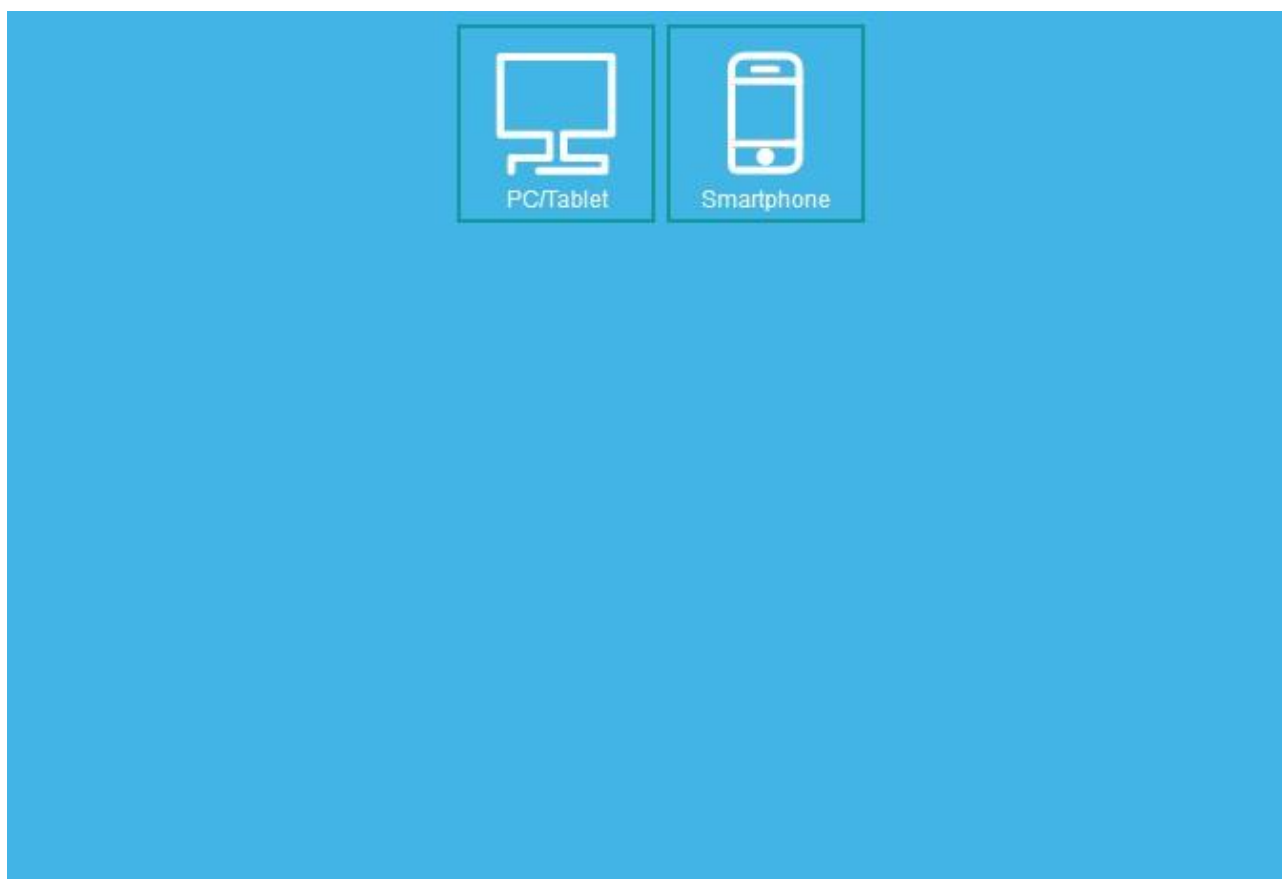


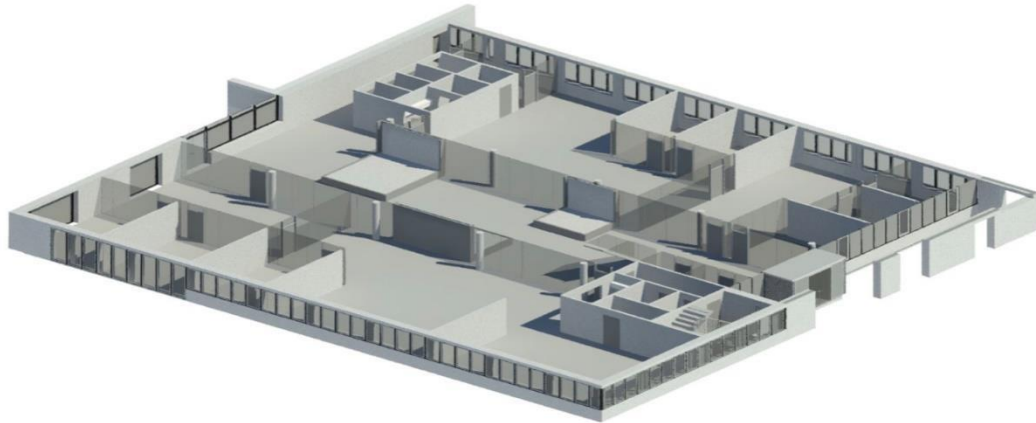
# Manual for controlling the blinders:

Control of the blinders is accessed by using a browser. It is recommended that either safari or Firefox is used, however other browsers should work just fine.

1. Go to the website <https://persienner.tangen6.dk>
2. Pick either PC/Tablet or smartphone depending on what u are using
3. Login with the username: tangen and the password Tangen8200



Billede: <https://persienner.tangen6.dk>

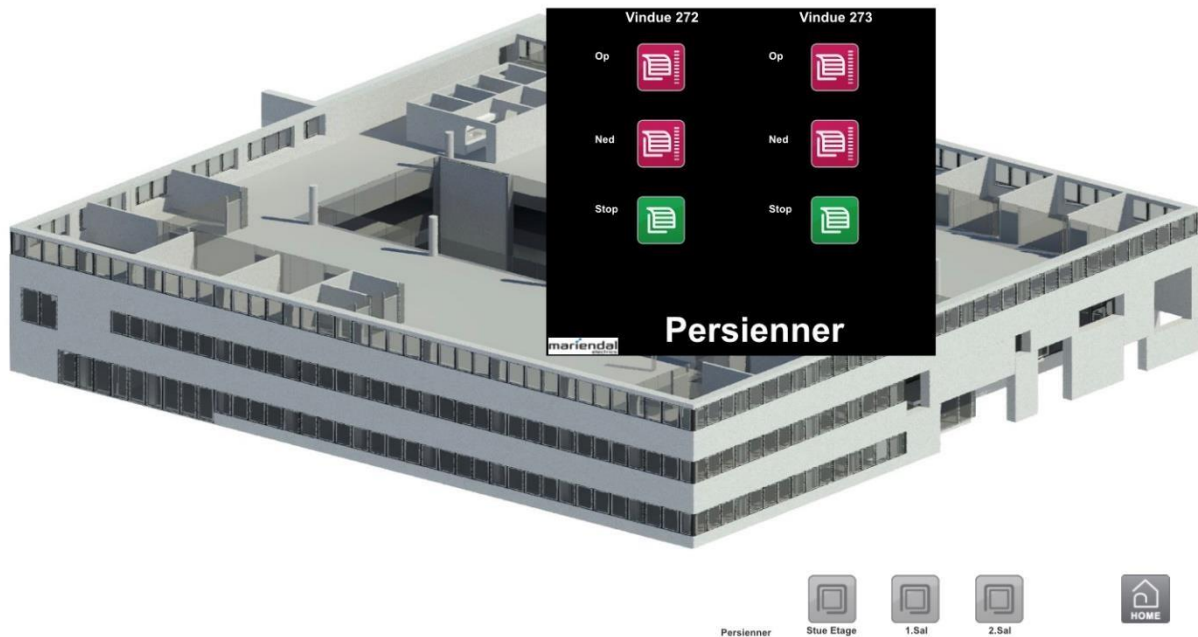


All of the windows have a unique number:

001-x ground floor

100-x 1. floor

200-x 2. floor



### Controlling the blinders:

The sketch is representation of B2 and you will be able to select individual floors depending on which blinder you would want to fiddle with. After selecting the floor, you click on window you want to control, and a widget will pop up as shown on the picture. In each window there is a physical ID number which matches with the number on the widget, and thereby shows you which buttons to click.

### The options are as following:

- Op:** makes the blinder go up
- Ned:** makes the blinder go down
- Stop:** makes the blinder stop

By using the stop option, it is possible to angle the blinders altering their position, giving them the amount of transparency, you want. As an example clicking the "Op" button swiftly follow by clicking the "Stop" button will give you the advantage of being able to see the outside through this blinder.

### Using wall controls:

Using wall controls is still possible however you will not be able to control individual blinders this way.

### Auto mode:

At 2.45 during weekdays all blinders in the windows facing north and east closes down to avoid the heat from the morning sun. This is active until between 8.00-8.05 from which the automatic control of the blinders takes over. This means the blinders automatically react to the direction and intensity of the sun which is measured by a sensor on the roof and a GPS. To ensure the blinders efficiently blocks out the sun the changes you make locally resets to auto mode 8.05, 10.00, and 13.00

### Smartphone access

To make it easier to use on your smartphone there is no 3D visualization but simply a box where you put the ID number of the window you wish to control. The same can be done for with the computer/tablet tab.



**For all of this to work you have to be connected to a Wifi network.**

Please refer all questions to [ejd@tangen6.dk](mailto:ejd@tangen6.dk) should there be any issues